

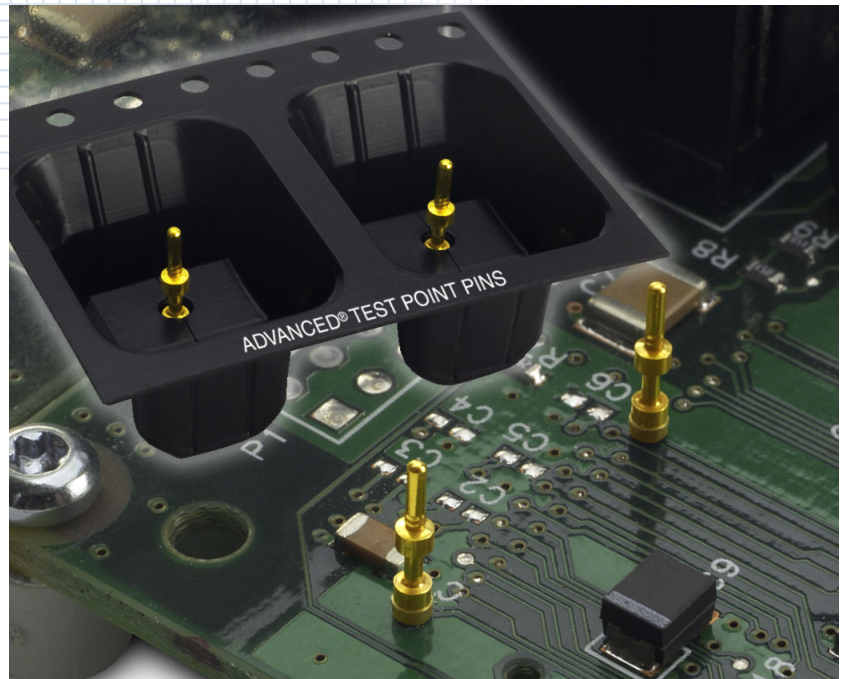
# Advanced® Test Point Pins



[www.advanced.com](http://www.advanced.com)

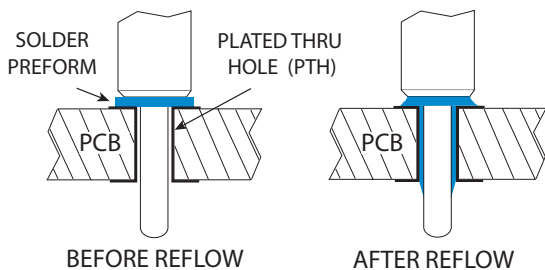
Advanced Interconnections offers a wide variety of standard and custom terminals for use as Test Point Pins. The screw-machined pins offer superior durability over stamped-and-formed products while reducing assembly time and safety concerns.

As with all products from Advanced, unique features and value-added services are available to help reduce overall system costs. Custom design options include unique solder preforms and tape and reel packaging.



## How It Works

### Solder Preform Option



When used in an intrusive reflow application, the solder preform eliminates the need for wave or hand soldering, providing the strength of a thru-hole connection point without the need for additional board processing in surface mount (SMT) applications.

- ▶ Solder paste is applied over the PCB board hole in an operation called tenting.
- ▶ The test pin with preform is placed into the “tenting” hole.
- ▶ Flux in the solder paste activates the solder preform.

## Features

- Unique rounded terminal head significantly reduces the potential for pinprick injuries to employees' fingers during assembly and subsequent board handling, compared to traditional sharp-pointed .025 inch square-post test pins
- Available loose or individually packaged in tape and reel pockets to facilitate automated insertion (300 pins per reel)
- When used on surface mount PCB boards, Test Pins with unique solder preforms are available (see How it Works for intrusive reflow application)
- Precision-machined from Brass Copper Alloy and plated with either Matte Tin or Gold over Nickel for RoHS compliant applications or Tin/Lead over Nickel for exempt applications
- Available with Sn/Pb or Sn/Ag/Cu solder preforms
- Custom designed to your specifications



5 Energy Way, West Warwick, Rhode Island 02893 USA  
Tel: 800.424.9850 | 401.823.5200 | Fax: 401.823.8723  
E-mail: [info@advanced.com](mailto:info@advanced.com) | Web: [www.advanced.com](http://www.advanced.com)